

WIDER, DEEPER, SAFER

In June 2015, the port and U.S. Army Corps of Engineers (USACE) began the General Reevaluation Report to justify channel deepening and widening from its current 50' to 55' in order to continue to build on the port's ability to serve its customers and foster job creation opportunities. In January 2018, USACE approved the National Economic Development (NED) plan calling for additional depth and width, and in February 2018, the USACE 7001 Annual Report to Congress included additional widening to 1400' in Thimble Shoal Channel to enable safe, two-way traffic and prevent delays to commercial and military vessels.

The Chief of Engineers Report received final approval on June 29, 2018, and the project received full authorization when President Trump signed America's Water Infrastructure Act of 2018 on October 23. The port worked closely with USACE to accelerate transition from planning to design and construction. To that end, the Virginia General Assembly and Governor included full funding of \$20 million for Preconstruction Engineering and Design (PED) and \$330 million for construction in the Commonwealth of Virginia's FY19-20 biennial budget. Using those funds along with \$3.5 million in federal funds included in the USACE FY19 Work Plan, The Port of Virginia completed design of the first constructible element.

The first contract was awarded in October and construction began in December 2019. Thimble Shoal West deepening is funded and administered by the port and is in full compliance with federal standards under a Memorandum Of Understanding signed with the Norfolk District in July 2017. Further, the construction work is eligible for consideration as Work-In-Kind once a Project Partnership Agreement is signed.

The additional \$2.5 million included in the FY20 Presidents Budget and USACE Work Plan will allow the Norfolk District to complete PED and have the project ready for a New Start designation and construction funds in the FY21 Work Plan.

FEDERAL CONSTRUCTION FUNDING REQUIREMENTS:

FY21 - \$78.3 million and a New Start designation

FY22 - \$34.6 million

FY23 - \$37.6 million

FY24 - \$35.5 million

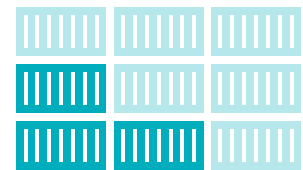
Total Federal Investment: \$186 million



Virginia is the **second largest agricultural exporter** on the U.S. East Coast



One of 17 U.S. strategic ports and home of the **world's largest naval base**



34 percent of cargo arrives and departs the port by rail, the largest percentage of any U.S. East Coast port



More than **14,000 businesses** from all contiguous 48 states move cargo through Virginia



THE PORT OF VIRGINIA®

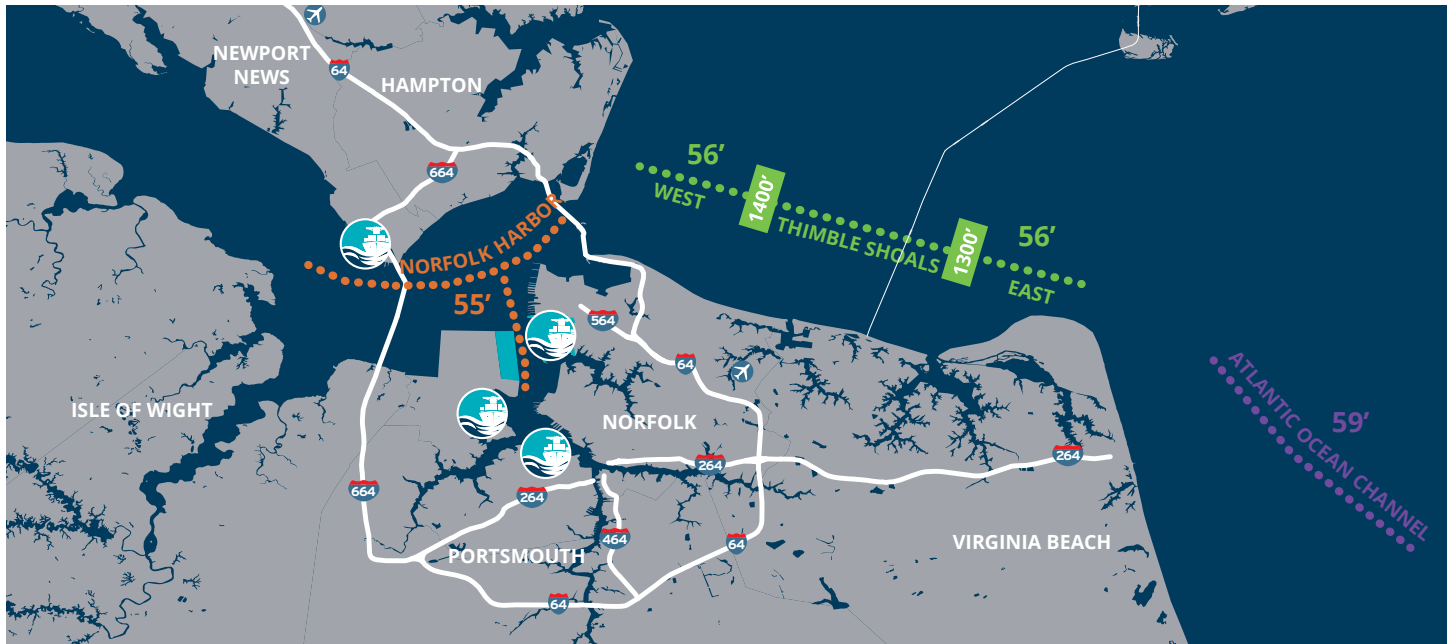
NORFOLK HARBOR AND CHANNELS PROJECT

The Port of Virginia does more than service ships hauling cargo; it drives investment, job creation, revenue growth, and connects the nation to the world.

DREDGES ARE IN THE WATER

The Port of Virginia's journey to becoming the deepest port on the U.S. East Coast is underway. Dredges took to the water on December 1 to begin the deepening that will accommodate the largest container vessels calling the East Coast – nearly two and half years ahead of schedule.

Since 2014, vessels calling on The Port of Virginia have nearly doubled in size - from 8,000 TEUs to 15,300 TEUs. Based on this growth, the port community is preparing for 16,000 and 18,000 TEU vessels in the next few years. The port remains committed to widening and deepening Norfolk Harbor and channels to make way for safe and efficient two-way passage of ultra-large container vessels (ULCVs). With an additional five feet of depth, ships could come to — and leave — Virginia fully loaded with cargo. That cargo equates to thousands of jobs across the United States. Widening the channel up to 1,400' will enable safe, two-way traffic and prevent delays to commercial and military vessels caused by U.S. Coast Guard restrictions and allow The Port of Virginia to better serve its customers, the commonwealth of Virginia, and the country.



NORFOLK HARBOR & CHANNELS PROJECT TIMELINE



OCT '18

America's Water Infrastructure Act of 2018 fully authorizes the Norfolk Harbor Project



DEC '19

Construction on deepening the channel to 55 feet and widening in certain areas begins



EARLY '25

The dredging work is complete, and Virginia is home to deepest port on the U.S. East Coast*

**Proposed schedule*